

Professional Digital Multimeters Digital AC, AC/DC Clamp Meters Electrical Testers Insulation Testers



EMC & LVD
EN: 61326
EN: 61010-1, EN: 61010-02-031



EMC & LVD
EN: 61326
EN: 61010-1, EN: 61010-02-031

Professional Industrial Digital Multimeters
Double molded
Accurate measurement
CAT IV 600V
CAT III 1000V



Model 988 (P83)



Model 3381 (P119)

AC/DC clamp meter
True RMS current measurement
Double molded housing
CAT IV 600V, CAT III 1000V

Model 961 (P97)



Model 218 (P103)



Model 9989 (P75)



Model 9382 (P117)



Model 6605 (P153)



Model 6650 (P145)



- TFT color LCD display
- 50000 counts
- PC Calibration

- IP67 dust and water proof
- True RMS



Model 9987



EMC & LVD
EN: 61326
EN: 61010-1, EN: 61010-02-031



The 9987 Professional True RMS Industrial Digital Multimeter with TFT color LCD display, providing fast A/D converting sampling time, high accuracy, built-in datalogging and Trend Capture features. It can trace any interrupted problems of the equipments and watch on without person. It is easy to find and solve the problems of the production equipments, providing Bluetooth technology and memory the datasheets. It is much more safer measurements with double molded plastic housing design and IP67 waterproof function.

Safety Conformance

- EN61010-1 CAT IV 600V, CAT III 1000V
- 1000V input protection on all ranges
- 10A/1000V & 0.8A/1000V fuses protection on current ranges

Features

- Large 50,000 count 320 x 240 TFT color LCD display
- Logging function with TrendCapture for easy review of logged data
- Bluetooth interface for easy data transfer & accuracy calibration
- 100kHz bandwidth (voltage/current)
- AC, AC-DC True-RMS measurements
- Records events and trends
- Saves measurements
- A/D convert fast sampling time
- Peak capture (records transients as fast as 250µs)
- Min/Max/Average with Time stamp (records signal fluctuations)
- Moto winding and low ohm 50Ω measurement range
- 4-20mA process loop measurements with % reading
- Low pass filter
- IP Rating 67
- Meterbox iMM & cloud service

Specifications

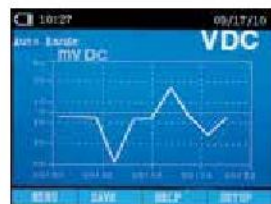
Function	Maximum	Max. resolution	Accuracy
Voltage DC	1000V	1µV	±(0.025% + 5)
Voltage AC	1000V	1µV	±(0.4% + 40)
Current DC	10A	0.01µA	±(0.15% + 2)
Current AC	10A	0.01µA	±(0.6% + 5)
Temperature	-200°C to 1350°C	0.1°C	±(1.0% + 2.5°C)
Resistance	50MΩ	0.01Ω	±(0.05% + 2)
Capacitance	10mF	0.001nF	±(1.0% + 5)
Frequency	10MHz	0.01Hz	±(0.005% + 1)
Diode and Continuity	Yes		
PC Interface	Bluetooth		
Power Supply	6 hours Li-ion rechargeable battery; AC Adaptor/charger		

Size(HxWxD): 220mm x 96mm x 60mm Weight: 631g

Accessories:
Test leads, Li-ion batteries, Type K temperature probe, AC Adaptor Software, gift box with carrying case.



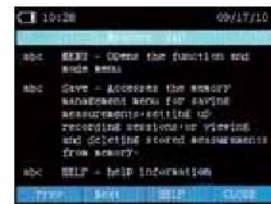
Fast response time



Trend Capture function



High Resolution & Accuracy



Help Menu



- IP67 dust and water proof
- True RMS

- Full Graphics LCD display
- 50000 counts
- PC Calibration

9979 Professional True RMS Industrial Digital Multimeter with 50,000 counts and full Graphics Type LCD display with white backlight, providing fast A/D converting sampling time, high accuracy, built-in datalogging and Trend Capture features. It can monitor any problems of the equipments and watch on without person. It is easy to find and solve the problems of the production equipments, providing Bluetooth technology and memory the datasheets. It is much more safe measurements with double molded plastic housing design and IP67 waterproof function.

Safety Conformance

- EN61010-1 CAT IV 600V, CAT III 1000V
- 1000V input protection on all ranges
- 10A/1000V & 0.8A/1000V fuses protection on current ranges



EMC & LVD
EN: 61326
EN: 61010-1, EN: 61010-02-031



Features

- Large 50,000 counts, Full Graphics Type LCD display with white backlight. Multiple sets of measurement information can simultaneously be displayed at the same time.
- Voltage (DC/AC), current(DC/AC), resistor, diode, capacitance, frequency and duty cycle measurement
- Ability to record data of signals and review Trend Capture curve, monitoring while you work on other project, It plots measurements as a single line to help detect signal anomalies over time; store up to 10,000 recorded events
- Log multiple sessions or log data continuously for over 200 hours.
- Real Time Clock – for automatic time stamping of saved readings
- Expandable meter lets you stay current as new capabilities are added
- Allow to save and name the measurements, and also recall them at any time
- Min/Max/Average with Time Stamp to record signal fluctuations
- Auto zeroing function
- Soft keys, scroll buttons much more secondary functions to access in easily
- TRMS AC voltage and current for accurate measurements on complex signals or non-linear loads.
- Measure up to 10A (20 A for 30 seconds; 10A continuous)
- Peak hold function with calibration mode
- 10MHz Frequency counter and 1MHz duty cycle measurement
- IP67 Waterproof and Auto Power Off
- Bluetooth interface
- Meterbox iMM & cloud service

Specifications

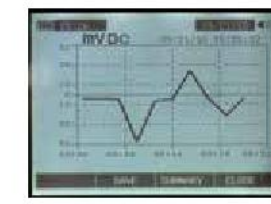
Function	Maximum	Max. resolution	Accuracy
Voltage DC	1000V	1µV	±(0.025% + 5)
Voltage AC	1000V	1µV	±(0.4% + 40)
Current DC	10A	0.01µA	±(0.15% + 2)
Current AC	10A	0.01µA	±(0.6% + 5)
Temperature	-200°C to 1350°C	0.1°C	±(1.0% + 2.5°C)
Resistance	50MΩ	0.01Ω	±(0.05% + 2)
Capacitance	10mF	0.001mF	±(1.0% + 5)
Frequency	10MHz	0.01Hz	±(0.005% + 1)
Diode and Continuity	Yes		
PC Interface	Bluetooth		
Power Supply	6 hours Li-ion rechargeable battery; AC Adaptor/charger		

Size(HxWxD): 220mm x 96mm x 60mm Weight: 631g

Accessories:
Test leads, Li-ion batteries, Type K temperature probe, Software, gift box with carrying case.



Model 9979



Trend Capture function



Fast Response time



Real-time data Recording



Multifunction selectable